

MONTHLY MEMBERSHIP PROGRESS REPORT

LOCATION INDIA

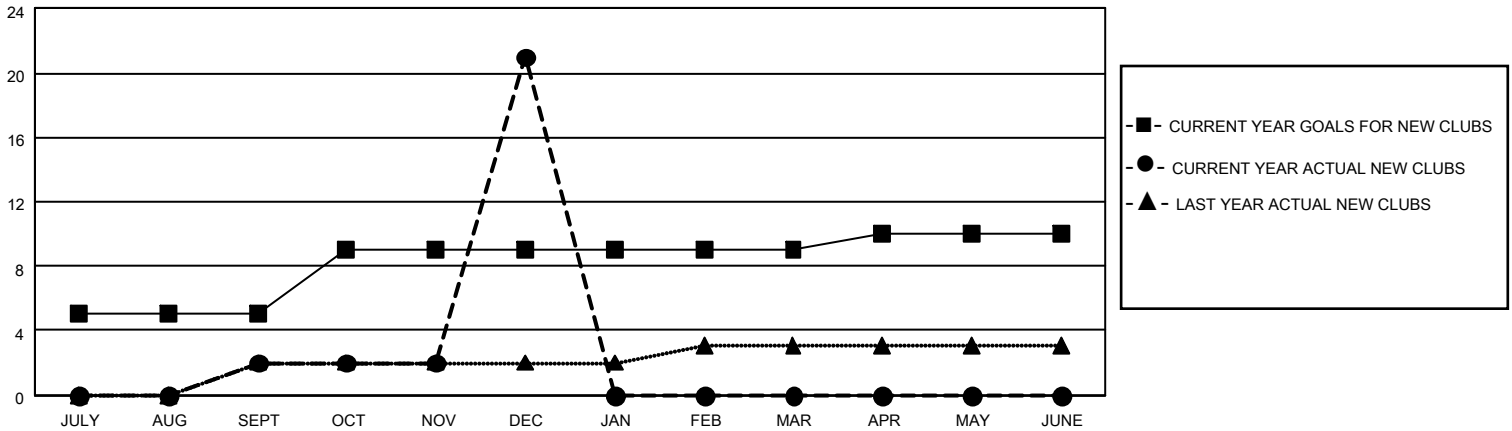
District 321A3

Results as of: 12/31/2020

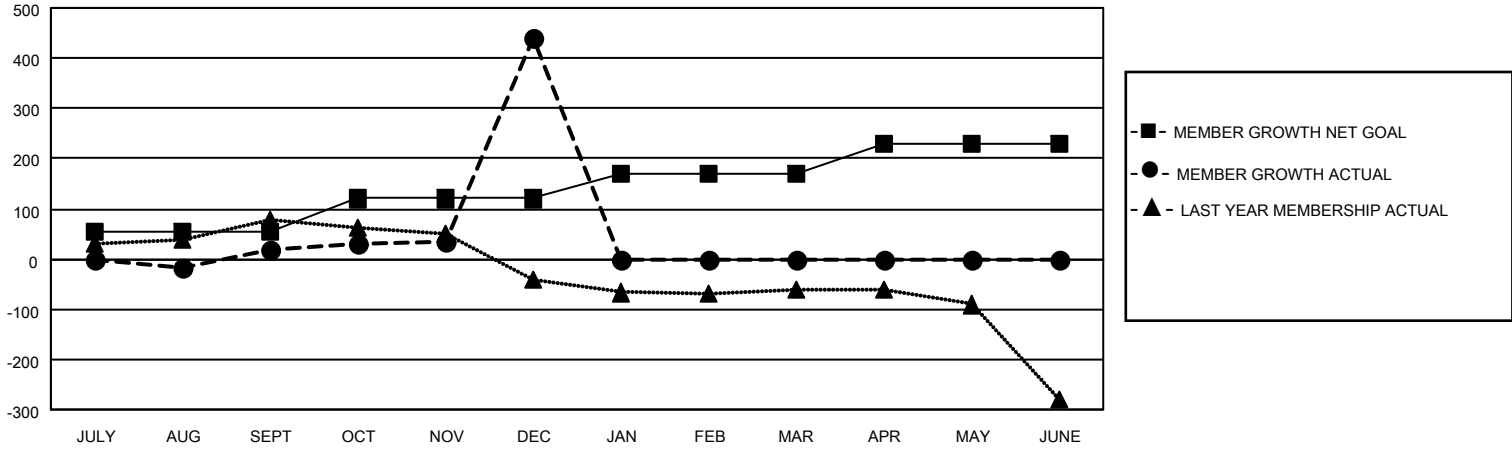
Clubs			
RESULTS FOR 2020-2021			
QUARTER	NEW CLUB GOAL	NEW CLUBS	DROPPED CLUBS
JULY/AUG/SEPT	5	2	0
OCT/NOV/DEC	4	19	0
JAN/FEB/MAR	0	0	0
APR/MAY/JUNE	1	0	0

Members			
RESULTS FOR 2020-2021			
QUARTER	MEMBER GROWTH NET GOAL	MEMBER GROWTH ACTUAL	DROPPED MEMBERS ACTUAL (including transfers)
JULY/AUG/SEPT	55	72	47
OCT/NOV/DEC	65	500	74
JAN/FEB/MAR	50	0	0
APR/MAY/JUNE	60	0	0

GOALS AND ACTUAL NEW CLUBS CUMULATIVE



GOALS AND ACTUAL MEMBERS CUMULATIVE



DROPPED CLUBS: 0	48 CLUBS OF 114 ADDED 1 OR MORE NEW MEMBERS	<u>GENDER DISTRIBUTION</u>
<u>DROPPED MEMBERS</u>	CLICK HERE FOR CUMULATIVE MEMBERSHIP DATA	MALE 1,716 (74.09%)
DECEASED 6		FEMALE 600 (25.91%)
CLUB CANCELLED 0		TOTAL FAMILY UNIT MEMBERS 940
OTHER 115		FAMILY MEMBERS PAYING HALF DUES 509
TOTAL 121		